



Split a Flower Embroidery

This exercise is taken from the Split Project Wizard chapter of the PREMIER+™ EMBROIDERY/PREMIER+™ EXTRA Reference Guide.

Use the Split Project Wizard to split very large projects, or to split smaller projects that are still too large to fit into your largest hoop.

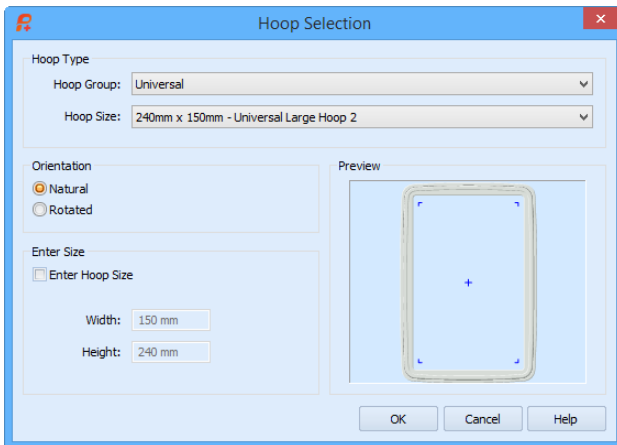
Split a Flower 1 - Load and Split a Flower

The Split Project Wizard is only available in PREMIER+™ EXTRA.

- 1 Click File, Open .
The hoop size shows the whole project, not the actual hoop size which will be selected before stitching out.
- 2 Browse to the folder Documents\Premier+\Samples\Premier+Inspiration\Floral\Stitch and select the file Three Flowers.
- 3 Click the Wizards tab.
- 4 Click Split Project . The Split Embroidery page of the Split Project Wizard will appear.
- 5 Click Change Hoop to select the hoop and its orientation. The Hoop Selection dialog box will appear.
- 6 In the Hoop Selection dialog box select Universal from the Hoop Group drop-down list.
- 7 From the Hoop Size drop-down list, select 240 x 150mm - Universal Large Hoop 2, Natural Orientation.



It is not necessary to choose the hoop orientation, as this will be set automatically to create the least number of hoopings. However, the split lines may be more pleasing in one orientation, so it is worth checking the results with both orientations.



For a large embroidery that is to be split into several sections, use the largest single-part hoop available for your machine.

- 8 Click OK.

9 Now select the settings for splitting the embroidery. *When splitting your project, try to adjust your settings to minimize cutting the embroidery. Use the preview when selecting the hoop and Overlap.*

10 Check that the Intelligent Split Method is selected. *Intelligent Split calculates a split line that cuts through the minimum number of stitches. When Intelligent Split is in use, the Compensation settings are unavailable (grayed out).*

11 For Alignment Stitch Style, select None.

Depending on your machine, you may prefer to choose no Alignment stitches (many machines with this hoop type have special positioning features; for example HUSQVARNA VIKING® Designer Diamond Royale or PFAFF® creative sensation Pro).

For other machines, use Corner alignment, as these are lightly stitched embroideries, and there are few splits within design elements.

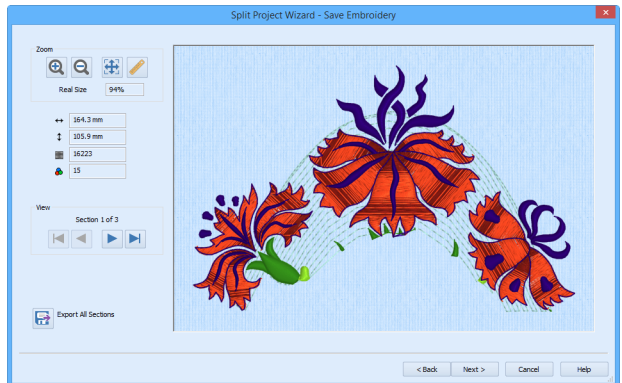
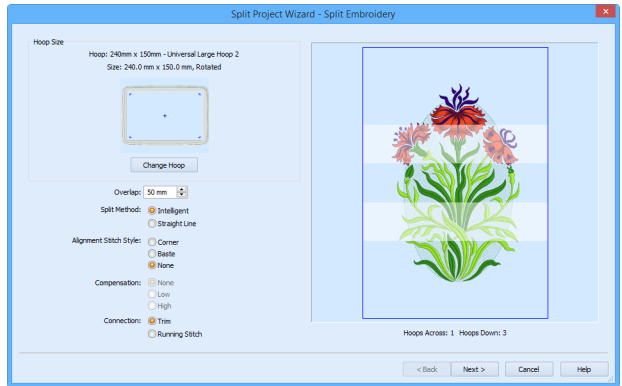
12 Check that Connection is set to Trim as the split lines will not cross large stitch areas.

13 Leave Overlap at the default of 50mm.

14 Click Next. The Save Embroidery page appears.


15 Use the View Next ► and View Previous ◀ buttons to step through the sections and check the split lines for the whole design.

16 The split line has cut through the middle flower. Click Back to change the overlap.



Split a Flower 2 - Adjust Split Lines & Save

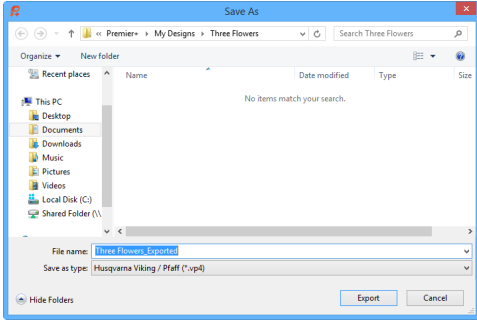
17 Set the Overlap to 57mm, then click Next. The split line no longer cuts the red petals of the flower. *You can adjust the Overlap to avoid splitting an area. Increasing or decreasing overlap may make it easier for Intelligent Split to fit all of an embroidery into one section, or to cut the embroidery in an inconspicuous place.*

18 Click Export All Sections  to save the project as numbered sections. The Export dialog box will appear.

19 In File Format, ensure that .vp4 is selected, then click OK. The Save As dialog box will appear. *The preferred file format for saving embroideries is .vp4, as this will preserve thread color information and Notes.*

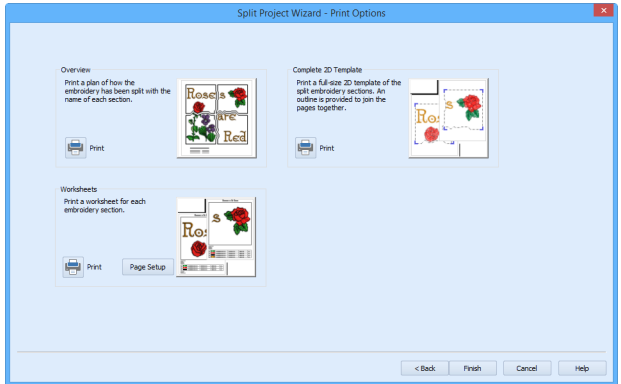
20 In the Save In box, browse to the folder Documents\Premier+\My Designs.


- 21 Click "New Folder", and name the new folder Three Flowers. Then browse to the new folder.
- 22 In the File Name box, enter the name 'Three Flowers_Exported', then click Export.



The files will be saved as the files Three Flowers_Exported_01 to Three Flowers_Exported_03. Creating a new folder makes it easier to find all the sections.

- 23 Click Next. The Print Options page will appear. If you have not saved the files a warning message will be displayed.



- 24 In the Overview area, click Print .
- 25 In the Print dialog box click OK to start printing. An overview of how the embroidery has been split will be printed. *The Overview shows how the embroidery has been split, how each split section has been named, and the number of stitches involved. Use this to determine the order which you think is best for stitching out the split sections.*
- 26 In the Complete 2D Template area click Print, and then OK. (If necessary, use Properties to change printing to single side.) A full-size 2D template of the split embroidery sections is printed, with an outline around each section to indicate how to join them together. *Cut out the 2D template and attach the sections as a guide for positioning fabric within the hoop.*
- 27 In the Worksheets area, click Page Setup.
- 28 In the Page Setup dialog box, set Design Scale to 50%, and click OK.
- 29 Click Print and then OK to print the worksheets. *The worksheets give the dimensions of the section, the number of stitches, information on the thread colors used and the Notes and Settings for the embroidery.*
- 30 Click Finish to close the Split Project Wizard.