




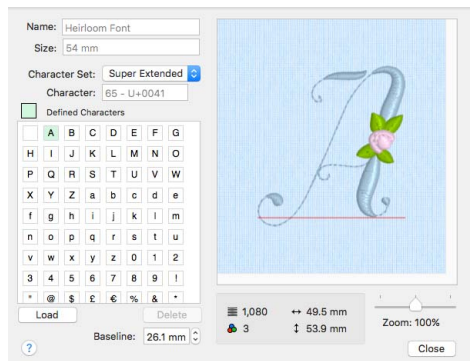
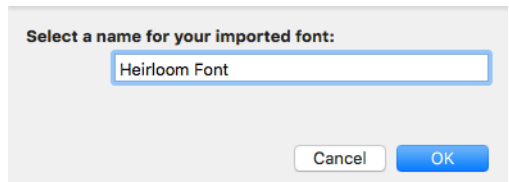
Create a Font from Embroidered Letters

This exercise is taken from the Creating Lettering chapter of the PREMIER+™ 2 Embroidery Reference Guide for Mac®.

Use Import Font From Embroideries  to import individual embroidered letters to create a font.

All letters must be added in a single session. You cannot reload an incomplete font.

- 1 Place your embroidered letters in a folder on your computer.
- 2 Open the Letter window .
- 3 Click Font Manager . The Font Manager dialog opens.
- 4 Click Import Font from Embroideries . A dialog opens for you to name your font.
- 5 Enter a name for your font, and click OK.
The font naming dialog closes and an Open dialog appears.
- 6 In the Open dialog, browse to the folder with your embroidered letters.
- 7 Select the Upper Case letter 'A', then click Open. The Import Font from Embroideries dialog opens with the letter 'A' selected.
Note: When using Import Font from Embroideries to create a font from individual embroideries, the Upper Case 'A' is always created first. The size of the letters in the font is taken from the letter 'A'.
- 8 In the Letter panel on the left, click the letter 'B'. The Open dialog opens for you to load the letter 'B'.
- 9 Click to select the letter 'B', then click Open to load it in the Import Font from Embroideries dialog.



10 Click to select the letter 'C' and load it.

Note: The Icon View option is useful when selecting letters.

11 Click to select the letter 'D', but in the Open dialog select the letter 'K' and click Open.

The letter 'D' is highlighted, but the letter 'K' is in the preview.

12 With the 'D' selected, click Load.

13 Click OK when asked about overwriting the character, and in the Open dialog select the letter 'D'.

Note: Alternatively, you could have clicked Delete to remove the incorrect letter.

14 Load the other Upper Case letters in this alphabet.

Note: All letters must be added in a single session. You cannot reload an incomplete font.

15 The red line across the preview is the Baseline for the selected letter. Click and hold the down arrow in the Baseline box. The line moves upwards across the letter.

Note: The Baseline sets where the letter will be placed along the line relative to the other letters in the font.

16 Adjust the Upper Case letters so that they will rest on the Baseline.

Note: If you want to start again with a particular letter, click Load and reload the embroidery. Many Upper Case fonts will need little Baseline adjustment.

17 Load the Lower Case letters for your font.

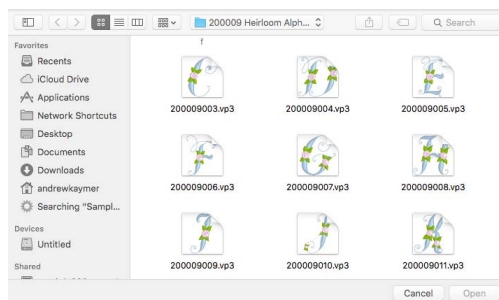
Note: Lower Case letters are likely to need more adjustment, particularly letters like p, g, and y with descenders.

18 When you have created all of your letters, click Close to save your font, and then in Font Manager click Close again.

19 Use your new font in the Letter tab.

Imported fonts work best with the Line, Vertical Block and Horizontal Block lettering shapes.

As the imported letters are stitch files, rather than fully adjustable design files, they work best at or near to their original size, with the minimum of reshaping.



VIKING, PFAFF, PREMIER+ and 6D are trademarks of Singer Sourcing Limited LLC. HUSQVARNA is the trademark of Husqvarna AB. All trademarks are used under license by VSM Group AB. © 2018 Singer Sourcing Limited LLC. All rights reserved.